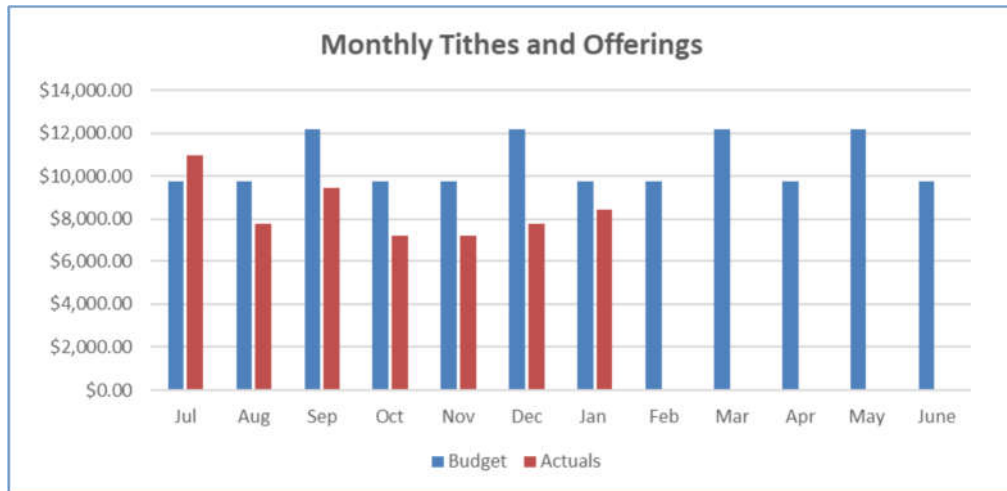


Total General Tithes and Offerings	\$8,425.18
Ave Weekly Tithes and Offerings	\$2106.92
Weekly Budget Requirement Tithes and Offerings	\$2,442.00
Surplus / Deficit per week	-\$335.70
Missions	\$336.45
Total Missions YTD	\$4,393.30
Designated Funds Held in account	\$3,554.70
General Account Balance	\$16.40
Total Bank Balance	\$3,571.10



In Touch

Logan Wesleyan Methodist Church



INTERNET BANKING

Bank : Beenleigh Westpac
 Account : Wesleyan Methodist Church Logan
 BSB : 034-268
 Account # : 130370

Reference Options:

- General Tithe - MSG Tithe
- Missions General - MSN Gen
- David Collins Support - MSN Collins
- Noro Project Support - MSN Noro
- Church Multiplication - MSC Multi



Who can forgive sins but God alone?

Mark 2:7

MARCH, 2020



NEW TO LOGAN CHURCH

Please join us for a cuppa and a chat after the service.

We would love the opportunity to get to know you.

To pass along prayer requests and contact information please fill in a Connect Card (available at the front desk) and place it in the offering bag.

DIRECTION STATEMENT

God created us in His image in order to please, glorify and delight in Him and spend eternity living and reigning with Him.

We seek God's transforming presence as we become a loving, life-giving community in Logan who

- Passionately worship God and intimately fellowship with Him
- Grow in Christ-like character and Spirit-empowered service
- Nurture non-believers into a relationship with God

CONTACT INFORMATION

Pastor : David Grounds
0401 133 497
david@loganwesleyan.org.au

Please be aware Friday and Saturday are Pastor David's days off unless an emergency

Church Office : 877 Kingston Road, Waterford West 4133

Prayer requests : Pastor David

Admin matters: admin@loganwesleyan.org.au

Website : loganwesleyan.org.au

Facebook : Logan Wesleyan Methodist Church



TUESDAY

9:30 am Daphne @ the church [Adult - weekly]

WEDNESDAY

7:00 pm Noel's Home [Adult - weekly]
7:00 pm Michael @ the church [Young Adults - weekly]

FRIDAY

6:30 pm Lisa @ the church [Youth & Young Adults - weekly]

SATURDAY

6:00 pm Finau @ the church [Tongan Adult - weekly]

SUNDAY

10:00 am Roslyn [Children & Youth - weekly]



Good News Sunday

April 5th

Who will you invite?

LOGAN CALENDAR - MARCH 2020

BOARD

Sunday	1	:	9:30 am	Worship (Communion) Children's Growth Group (Roslyn)
Tuesday	3	:	9:30 am	Adult Growth Group (Daphne)
Wednesday	4	:	11:30am 7:00 pm	Musical Lunch with Lyn Adult Growth Group (Noel's home)
Thursday	5	:	9:30 am 7.00pm	Connect Café (Heather) Membership Class (Michael)
Friday	6	:	6:30 pm	Youth & Young Adult's Growth Group (Lisa)
Saturday	7	:	7:00 am 6:00pm	Men's Breakfast (Albert) Adult Growth Group (Finau)
Sunday	8	:	9:30 am	Worship Children's Growth Group (Roslyn)
Tuesday	10	:	9:30 am	Adult Growth Group (Daphne)
Wednesday	11	:	7:00 pm	Adult Growth Group (Noel's home)
Thursday	12	:	9:30 am 7.00pm	Connect Café (Heather) Membership Class (Michael)
Friday	13	:	6:30 pm	Youth & Young Adult's Growth Group (Lisa)
Saturday	14	:	6:00 pm	Adult Growth Group (Finau)
Sunday	15	:	9:30 am	Worship Children's Growth Group (Roslyn)
Tuesday	17	:	9:30 am 6:30 pm	Adult Growth Group (Daphne) Board Meeting
Wednesday	18	:	7:00 pm 7:00 pm	Adult Growth Group (Noel's home) Young Adults Growth Group (Michael)
Thursday	19	:	9:30 am	Connect Café (Heather)
Friday	20	:	6:30 pm	Youth & Young Adult's Growth Group (Lisa)
Saturday	21	:	10:00am 6:00 pm	Women's Morning Tea (Roslyn) Adult Growth Group (Finau)
Sunday	22	:	9:30 am	Worship Children's Growth Group (Roslyn) Congregational Meeting
Tuesday	24	:	9:30 am	Adult Growth Group (Daphne)
Wednesday	25	:	7:00 pm 7:00 pm	Adult Growth Group (Noel's home) Young Adults Growth Group (Michael)
Thursday	26	:	9:30 am	Connect Café (Heather)
Friday	27	:	6:30 pm	Youth & Young Adult's Growth Group (Lisa)
Saturday	28	:	6:00 pm	Adult Growth Group (Finau)
			EASTER SERVICE TIMES: 8:00am 9:30am	Good Friday Service & Communion Resurrection Sunday

Pastor:	David Grounds
Vice Chairman:	Paul Larcombe
Secretary :	Tabitha Ring secretary@loganwesleyan.org.au
Treasurer :	Doug Ring treasurer@loganwesleyan.org.au
Members :	Robin Gallen
	Zebedee Hakizimana
	Glenda Harbourn

BOARD ACTIONS - 18 February, 2020

- ◆ Confirm minutes from 19/11/19 are true and correct
- ◆ Received Pastor's report
- ◆ Received Treasurer's Report
- ◆ Close Playgroup account and put proceeds in General account.
- ◆ LBA to investigate putting handrails on stage stairs
- ◆ LBA endorsed People Protection and Risk Management document
- ◆ Approved Youth fundraising events for Camp
- ◆ Quotes to be obtained for air-conditioning upstairs office

QUARTERLY CONGREGATIONAL MEETING

Quarterly Congregational Meeting to be held after the Service

on 22nd March 2020





7 am Saturday 7 March

RSVP Albert (0411 766 726)

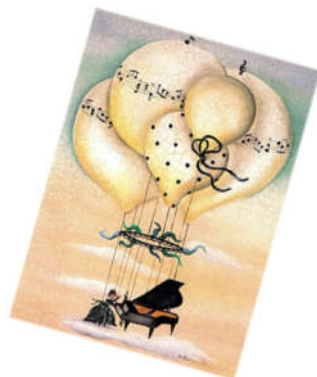
ALL WELCOME!

MUSICAL LUNCHES WITH LYN

11:30 am
Wednesday 4th March
Wednesday 1st April

RSVP Lyn (0407 172 483)

ALL WELCOME!



WOMEN'S MORNING TEA

10 am Saturday 21st March

Bring a photo of yourself as a baby
A plate of food to share appreciated

RSVP Roslyn (0488 459 670)

ALL WELCOME!



CAMP, RETREAT & CONFERENCE DATES 2020

YOUNG ADULTS; 22-24 May (\$170)

HIGH SCHOOL CAMP: 5 - 10 July (\$390)

WOMEN'S RETREAT: 14-16 August

DISTRICT CONFERENCE: 1-2 October

**Mark your Diary, plan to attend,
start saving and watch for further details.**

**The Youth will be holding some fundraising events for you to
support in the coming weeks. You may also like to help sponsor
a young person to camp.**



CONNECT CAFE

9:30 am Thursday at Logan Church

Devotions – Prayer – Fellowship – Food –
Activities

ALL WELCOME!



RECYCLING MONEY

If you would like to donate the proceeds from recycling of
bottles and cans please quote:

ID C10155472 to direct the proceeds to High School Camp
and Young Adult's Camp.

If you unable to go to the depot please bring your bottles and cans on
Sunday and place in the bag behind the Annexe or use the Recycle bin
inside. Any questions ask Lisa (0437 225 747)

